

Duramax Marine DuraBlue, a composite self-lubricating rudder bushing engineered for high performance

Duramax Marine DuraBlue is a pollution-free, self-lubricating rudder bushing designed to outperform traditional bushing materials. DuraBlue proprietary composite matrix is exceptionally wear resistant, with extremely long wear life, and high load capacity. DuraBlue ultra-low coefficient of friction of 0.04 to 0.08 eliminates stick slip.

DuraBlue is used for rudder stocks, pintles and steering gear bushings. It is an alternative to bronze, brass, nylon and other urethane based materials.

DuraBlue is dimensionally stable. It has a very low thermal coefficient of expansion in high and low temperature environments. Unlike polyurethane rudder bushings that have a wide range of thermal expansion and contraction rate. DuraBlue experiences negligible swelling in water, and remains stable in chemical solutions.

DuraBlue is tolerant to load edging and misalignments. Its composite structure is light weight and resists damage and fracture. It maintains a high compression strength, and a high strength to weight ratio.

Duramax DuraBlue Composite Rudder Bushings are available in outside diameters: 1" to 42" (2.5 – 107 cm). The bushings are easy to machine and install.

Duramax Marine is a world leader in water-lubricated bearing technology, along with engineered heat exchangers, shaft sealing, and impact protection systems. www.duramaxmarine.com



Caterpillar to showcase Cat marine engine repair options at the International WorkBoat Show

Caterpillar Inc. will showcase Cat marine engine repair options at the International WorkBoat Show Dec. 1-3 in New Orleans. The show is a resource for commercial marine professionals to learn about the latest in marine safety and technology.

Visitors to the Caterpillar display in booths 1901 and 2001 can learn about a variety of Caterpillar components for marine engines, which are designed and manufactured using quality materials and controlled processes for maximum performance and durability. The display will include:

- Cat liners – featuring a uniform surface finish and advanced design to ensure durability and performance;
- Cat valves – manufactured with precision heat treatment and welding for optimal strength and component life;
- Cat seals – chemically superior to ensure quality installation and durability;
- Cat gaskets – quality materials for improved sealing capability and longer life;
- and Cat Reman products – remanufactured to perform and last like new but sold at a fraction of the cost, all backed by our full one-year parts warranty.

For more information on these and other Caterpillar marine support products, visit catmarinesupport.com.



Conrad Shipyard lands multiple contracts in November



November proved to be a record-setting month for Conrad Shipyard as the company signed new construction contracts with three repeat customers. The new contracts consist of multiple oceangoing tank barges and tugs.

Johnny Conrad, Conrad Shipyard president and CEO, discussed the significance of the record setting achievement. "The fact that these contracts came from three long-term Conrad customers says volumes about our service, the quality of our work, and the exceptional shipbuilding teams that manufacture these vessels," he said. "We know that the Conrad way of doing business through quality, craftsmanship, integrity and service is key to our continued success."

Conrad Shipyard was founded in 1948. The shipyard has four ship-manufacturing facilities in Morgan City and Amelia, La., and one in Orange, Texas.

Conrad builds a wide variety of vessels including pushboats, tugs, offshore supply vessels, tank barges, LNG transport barges, ferries, ATBs, construction barges and specialty vessels.

Parker Conrad, the shipyard's founder, celebrated his 100th birthday in October. The standards he set for our company have served us well.

WORKBOAT

www.workboat.com

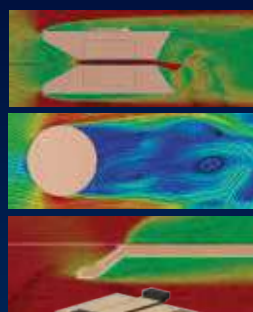
INTERNATIONAL
WORKBOAT
SHOW

Duramax Marine® Technology Makes a Big Splash!

at 2015 Workboat Show Booth #2801

DuraCooler SuprStak
with TurboTunnel Design

Doubles cooling efficiency in half the hull space.



- **ANGLED TURBOTUNNEL HEADER DESIGN** Jets sea water between tubes increasing heat transfer.
- **TURBULIZER SPACERS** Creates turbulence increasing cooling efficiency.
- **FLOW DIVERTER SCOOPS** Disrupt laminar flow, cooling high temperature areas.

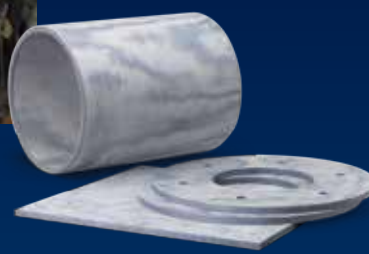


DURAMAX® DuraBlue
COMPOSITE RUDDER BUSHING

Dimensionally-stable rudder bushing that never steers you wrong.



- Self-lubricating, pollution free.
- Ultra-low friction value.
- Thermally and dimensionally stable.
- Exceptionally long wear life.
- Easy to machine and install.



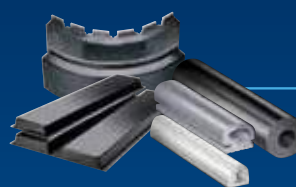
Johnson® Air Seal Stuffing Box and Duramax® Ultra-X® Compression Packing

Ultra-X® transforms any stuffing box into high-tech shaft seal solution!



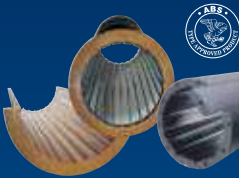
Johnson® Cutless® Water-Lubricated Sleeve and Flange Bearings

Long life bearing solutions for dirt-laden environments.



Duramax® Impact Protection Systems

Fenders and Tow Knees available in stock for quick delivery.



Advanced Water-Lubricated Bearing Systems

Engineered solutions deliver extended shaft and bearing life.

Duramax Marine® is an ISO 9001:2008 Certified Company

DURAMAX MARINE®

Products And Knowledge You Trust

p: 440.834.5400 f: 800.497.9283